



International  
**Forestry  
Students'**  
Association

# **Rooted Inequalities in Forest Education**

## **Insights from a students' perspective**

Nikolina Mencin

On behalf of the IFSA Gender Sub-Commission

# International Forestry Students' Association - IFSA

Largest network for  
**students of forestry and  
related fields**

141 local committees in  
**64 countries**



# IFSA Gender Sub-Commission

## Our team



*Clarissa Chimeremeze Enyi*



*Nele Römer*



*Vivienne Mack*



*Theresa Klara Loch*



*Barbara Öllerer*

# Voices of diverse forestry students



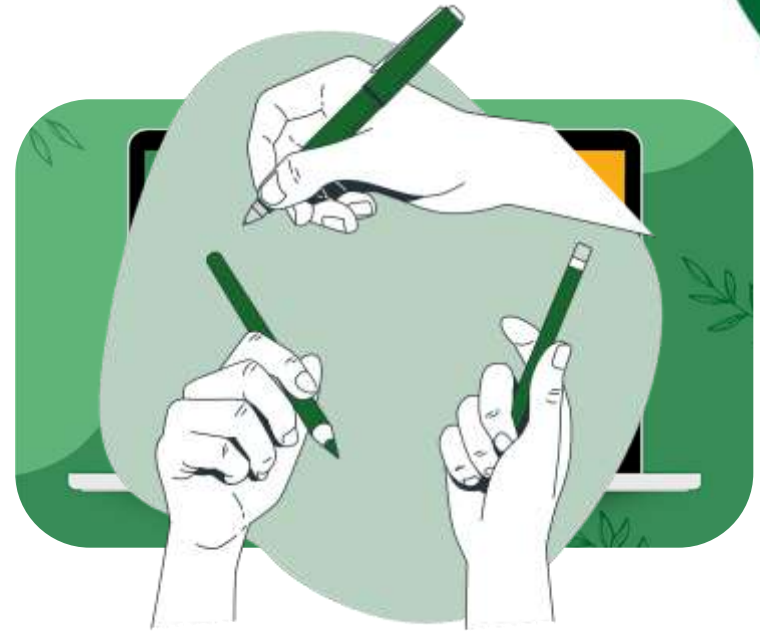
# Rooted Inequalities in Forest Education

## IFSA Open Letter on Gender and Forest Education - published in 2021

- gender equality in forest education
- a gender-aware learning environment

### Workshops:

- In-Person Workshop  
International Forestry Students'  
Symposium August 2023
- Online Workshop  
November 2023



# Rooted Inequalities



*Experiences*



*Strategies*



*Vision*

# *What are your experiences with gender-related discrimination in forest education?*



“I couldn’t practice chainsaw class because the (male) instructor felt that **girls are slow in learning** and **sometimes they overreact** which will put the class in danger.”

Participant, IFSA Workshop, August 2023



# How are you dealing with gender inequalities?



**Speaking up**

“I’m trying to **be very vocal about it** [...] if it’s not named, if it’s not, like, said out loud and recognised, **no change**. [...] It has created some wins [...] It’s, like, **really tricky**, but that’s just with it cause it makes me too mad not to say anything [...]”

Participant, Fire Workshop, November 2023

**Organising & supporting each other**

**Educating others**

**Being mindful of one’s own resources & limits**



# *What would an ideal gender equal forest education look like to you?*



## **Education**

Gender Equality Education

Inclusive Curriculum



## **Support**

Safer Spaces

Mentoring programs



# Summary



**Similar** experiences, strategies and vision across the world

Need for:

- **Education on & raise awareness** for gender-related discrimination
- **Safer spaces** and **trustworthy people** to talk to

# So what next?

## **Adapt & transform forest education together**

### ***We***

Raise awareness, share our experiences, needs & vision, contribute to initiatives

### ***You***

Share the IFSA Open Letter, get in touch with us and, most importantly, listen & talk to your students



# Thank you for your attention!

**Reach out to us:**  
[gender@ifsa.net](mailto:gender@ifsa.net)

**Read & share the Open Letter:** [ifsa.net/gender-open-letter/](https://ifsa.net/gender-open-letter/)

*All illustrations taken from storyset.com*