



Nature
Conservation Agency
Republic of Latvia

Nature Census in Latvia

'Preconditions for better biodiversity preservation and
ecosystem protection in Latvia'

Jēkabs Dzenis

Projects LIFE IP LatViaNature and LIFE FOR SPECIES
& Expert of forest habitats

30.09.2021.



Nature
Conservation Agency
Republic of Latvia

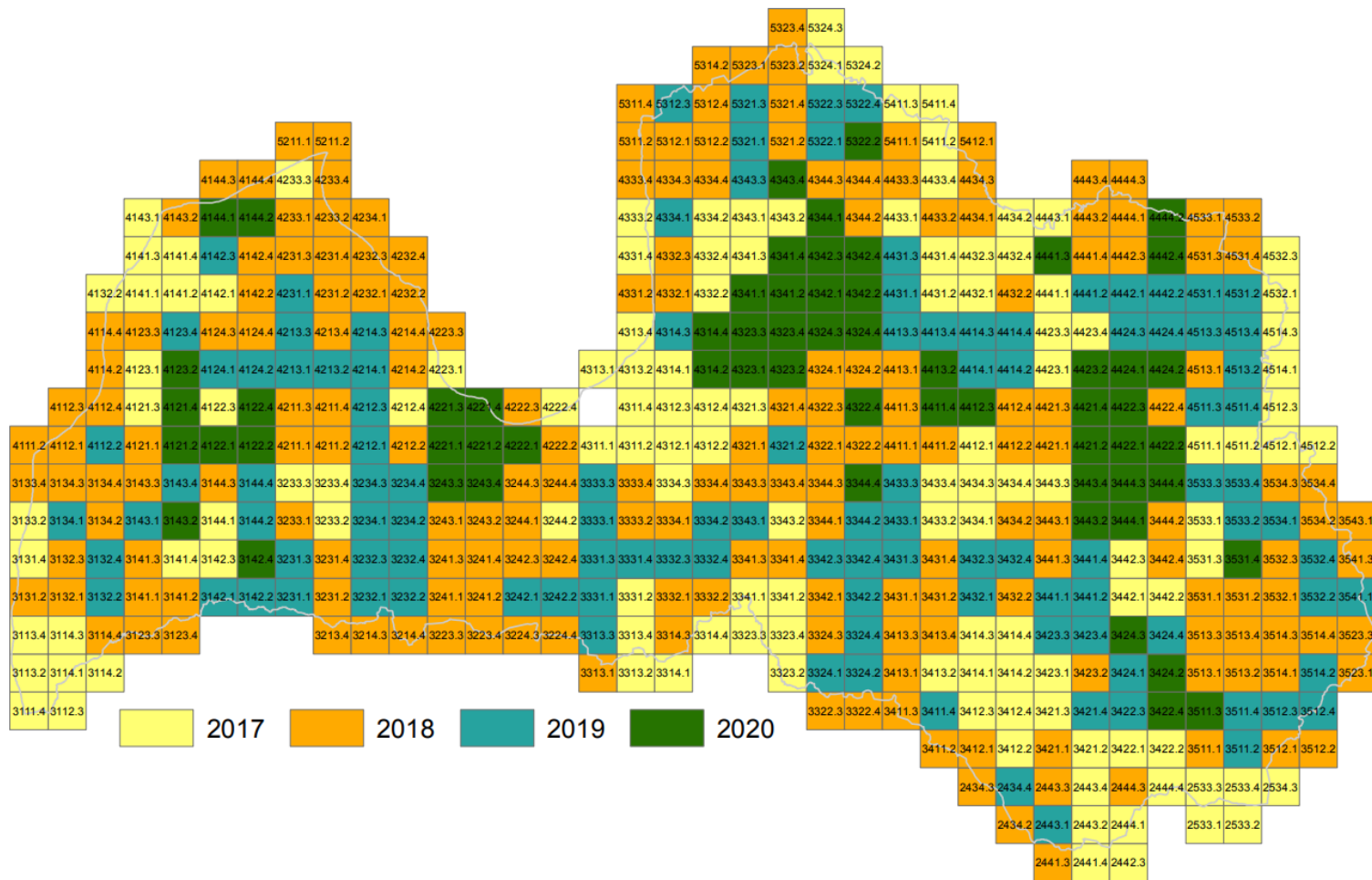
Main Goals of the Project:

- To perform the inventory of habitats of EU importance across the whole country (6 groups)
- To develop management plans for 25 Natura2000 sites – including two national parks
- To develop management plans for 5 species/groups of species (2 bat species, woodpeckers, owls, seals)



Nature
Conservation Agency
Republic of Latvia

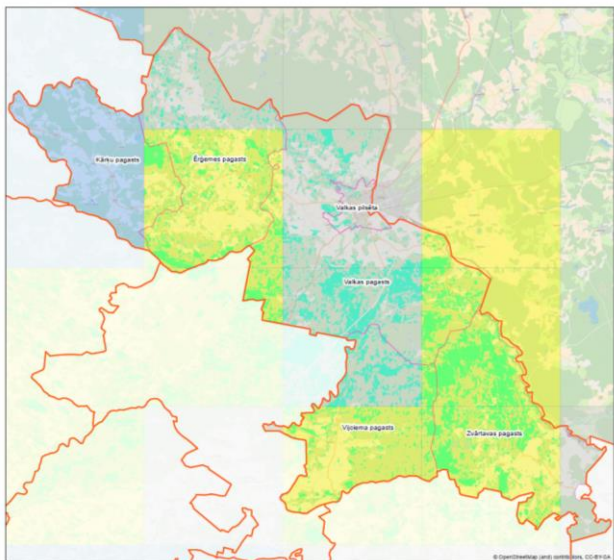
Habitat Inventory





Nature
Conservation Agency
Republic of Latvia

Mapping Unit

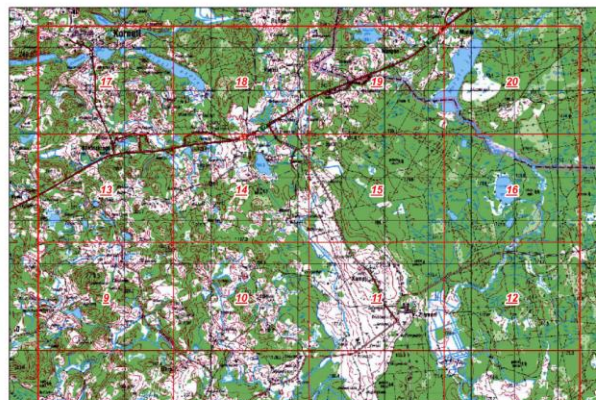


Valkas novads



Apzi
Kartēša
Apskojamās terit

Koordinātu sistēma LKS-92
© Dabaszinātnes pētījumu institūts



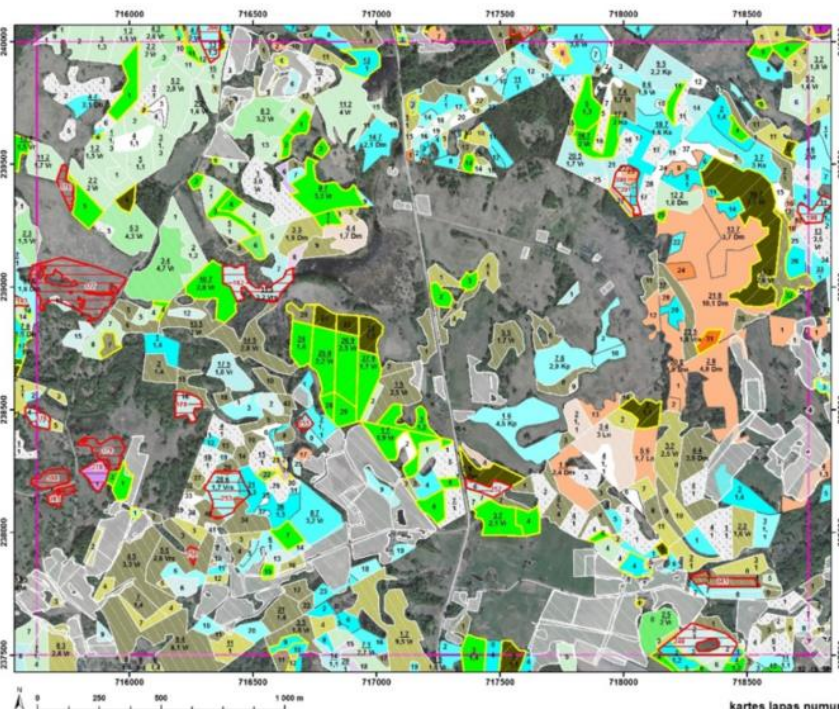
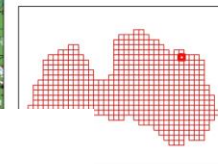
Kvadrāta numurs: 4444.1

1:50 000



Apzīmējumi

- Kartes kvadrāts
- Kartes lapa



kartes lapas numurs:

Koordinātu sistēma: LKS-92
© Dabaszinātnes pētījumu institūts
© Latvijas Ģeogrāfiskās informācijas aģentūra
© Valsts mežsaimniecība dienests
© Valsts mežsaimniecība dienests

3513.4-2



12 types and 40 subtypes of forest habitats

Pristine
(WKH)

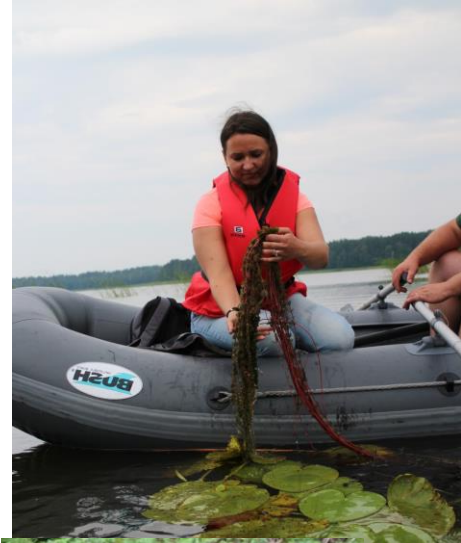


Managed

Kartējamo ES nozīmes biotopu noteikšana dabiskuma/nozīmīguma skalā

Biotopa kods	Biotopa variānti	Biotopa noteikšanas kritērijs, atbilst:				
		DMB	PDMB	3 elementi	Ģeoloģija, aspekts veģetācijā	Pārējais
		1	2	3	4	5
		Augsts dabiskums, specifiskas sugas → → →			Pārveidoti, vienkāršoti meži	
9010*	9010*_1 Sausieņu, tipisks boreālajai klasei atbilstošs					
	9010*_2 Sausieņu, boreāls koku stāvs, cita zemsedze					
	9010*_3 Uz nosusinātām augsnēm, dominē boreālais aspekts					
	9010*_4 Sausieņu, netraucētas nesenas meždegas					
	9010*_5 Sausieņu, netraucētas senas meždegas, kas jaunākas par (P)DMB					
9020*	9020*_1 Tipisks, dominē platlapju klases pazīmes					
	9020*_2 1.stāvā dominē A, E, B, zemāk dominē platlapju klase					
	9020*_3 Uz nosusinātām augsnēm, dominē platlapju klases pazīmes					
	9020*_4 Mistrota priežu-platlapju kokaudze, zemāk platlapju klase					
9060	9060 Osu ausnēm specifisks augu sabiedrību komplekss, vai sugu klātbūtne					
9080*	9080*_1 Tipiska stagnāju klase					
	9080*_2 Sekundārā meža sākumstadijas stagnāju klasei					
	9080*_3 Uz nosusinātām augsnēm, ir vai bijusi stagnāju klase					
9050	9050_1 Sausieņu, 1.(no 60 g.),2.st. kopumā dominē E, zemsedzē vismaz 30% platlapju klase					
	9050_2 Slapjainu, purvainu 1.(no 60 g.),2.st. kopumā dominē E, zemsedzē vismaz 30% platl. klase					
	9050_3 Nosusinātie, 1.(no 60 g.),2.st. kopumā dominē E, zemsedzē vismaz 30% platlapju klase					
9160	9160_1 Tipiskais, dominē Oz, Sk, viscaur platlapju klase					
	9160_2 1.st. dominē Oz, Sk, L sajaukumā ar ne-platlapju klases iezīmēm					
	9160_3 1.st. dominē Oz, L ar ievērojamu boreālas klases aspektu					
9180*	9180* Platlapju klases meži nogāzēs un gravās, kas neatbilst 9050					
91D0*	91D0*_1 Tipiskais, purvainu boreālā klase					
	91D0*_2 Boreālie purvaini, slapjaini ar plānu kūdras slāni					
	91D0*_3 Uz nosusinātām augsnēm, ir vai bijuši boreālie purvaini, slapjaini					
91E0*	91E0*_1 Platlapju klases purvaini, slapjaini, t.sk. šauras joslas gar tecēm					
	91E0*_2 Platlapju klases aluviāli sausieņu krastmalu un paliņu meži ar Vī, Ba, ievu					
	91E0*_3 Abi iepriekšējie varianti ar degradētu hidroloģisko režīmu					
91F0	91F0 Aluviāli meži pie lielām upēm, kur dominē G, V, Oz, Os					
91T0	91T0_1 Sausieņu P mežs uz iekšzemes eolajiem nogulumiem, ķērpju segums vismaz 25%					
	91T0_2 Augājs tāda paša sastāva kā 91T0_1, bet kokaudze jauna - jaunaudze līdz izcirtums					
2180	2180 Piejūras zemienes meži uz eolajiem nogulumiem, t.sk. nelieli ieslēgumi uz citām augsnēm					

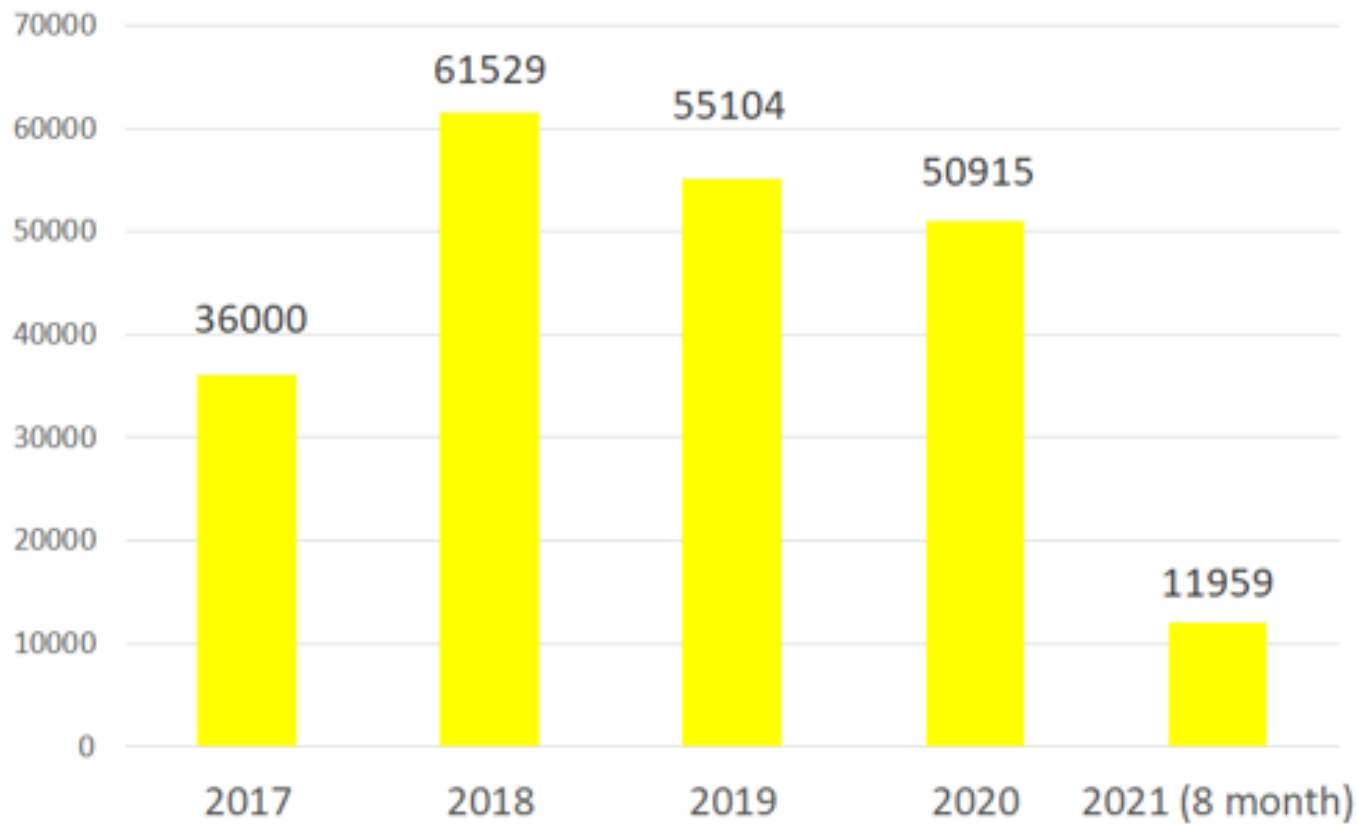
Fieldwork and challenges





Nature
Conservation Agency
Republic of Latvia

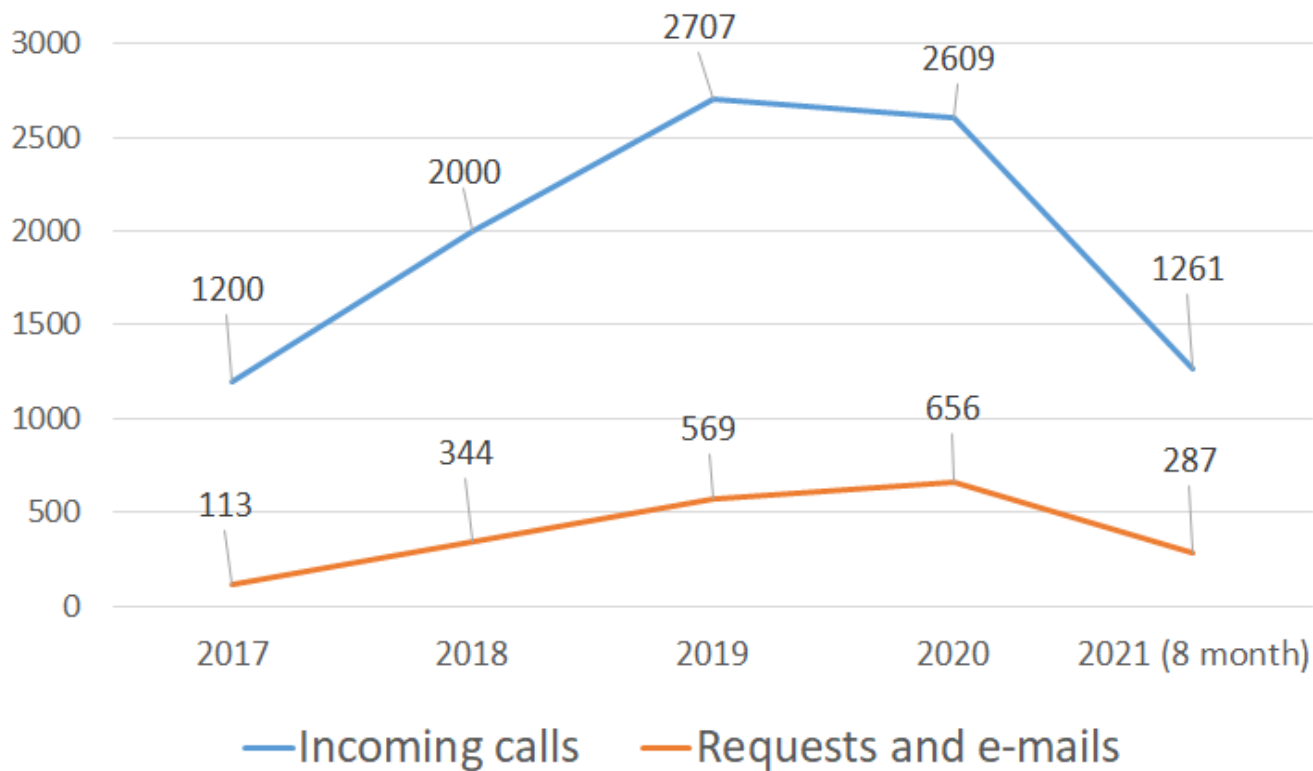
Information letters to landowners





Nature
Conservation Agency
Republic of Latvia

Feedback





Nature
Conservation Agency
Republic of Latvia

Digitalization of data

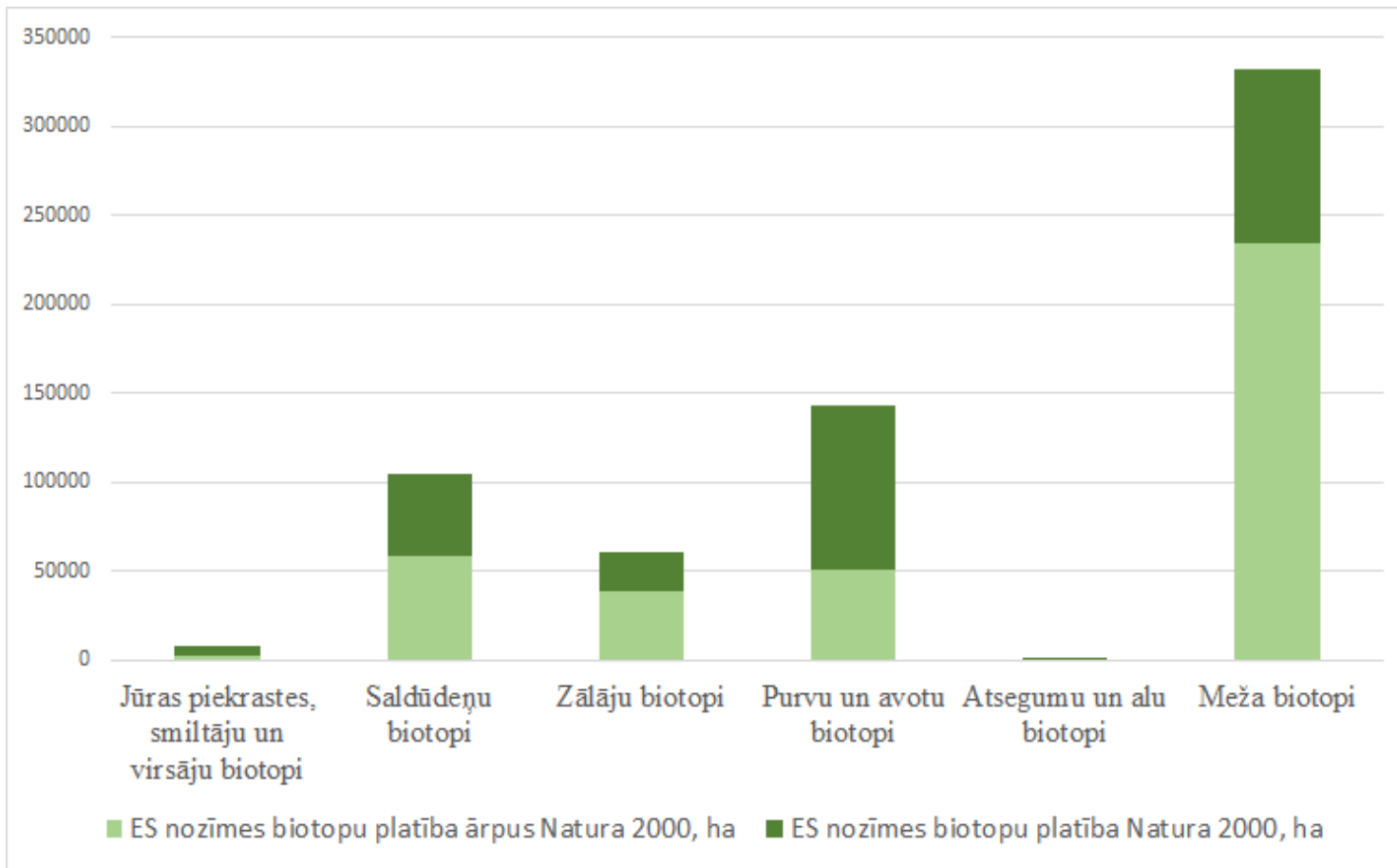
The screenshot shows the official website of the Nature Conservation Agency of Latvia. The main navigation bar includes 'Tēmas', 'Par mums', 'Pakalpojumi', and 'Aktualitātes'. The page title is 'Dabas datu pārvaldības sistēma OZOLS'. The content area features a large heading 'Dabas datu pārvaldības sistēma OZOLS' with a small globe icon. Below this, there is a detailed text block in Latvian explaining the system's purpose: to provide a unified platform for data management, including field data collection and processing. It mentions that the system is designed to be user-friendly and accessible to various stakeholders, including researchers and the public. The text also highlights the system's role in supporting decision-making and monitoring the state of natural resources. At the bottom of the page, there are links for 'IESA statusā >>>', 'REGISTRĒTA LIETOTĀJA statusā >>>', and 'reģistrēties/Āra mērķi:'. The footer contains the agency's name and contact information.

The screenshot displays the web application interface for the 'Dabas datu pārvaldības sistēma OZOLS'. The interface is divided into several sections. At the top, there is a header with the agency's logo and the system name. Below this, a map is shown with a scale of 1:20,000. The map displays various geographical features, including water bodies, roads, and land parcels, with red dots indicating data points. On the left side, there is a sidebar with a search bar and a list of results. The 'Rezultāti' section shows a list of search results, including 'Botāniskais BVZ' and 'IA Biotopi (laukumi)'. Below the list, there is a detailed view of a selected result, showing fields such as 'Klase', 'Biotopa kods', 'Variants', 'Anketas nr.', 'Datums', 'Platība (ha)', and 'ID'. The 'Rīki' section at the bottom left contains various tools for map navigation and data manipulation. The bottom right corner of the interface shows the user's name 'Irisa Mukāne [Irisamukane]' and the text 'reģistrējies/Āra mērķi:'. The footer of the application contains the system name 'Dabas datu pārvaldības sistēma "OZOLS"', the copyright information '© SIA "Envirotech"', and the contact information for the National Environmental Data Centre and the National Environmental Information Agency.



Nature
Conservation Agency
Republic of Latvia

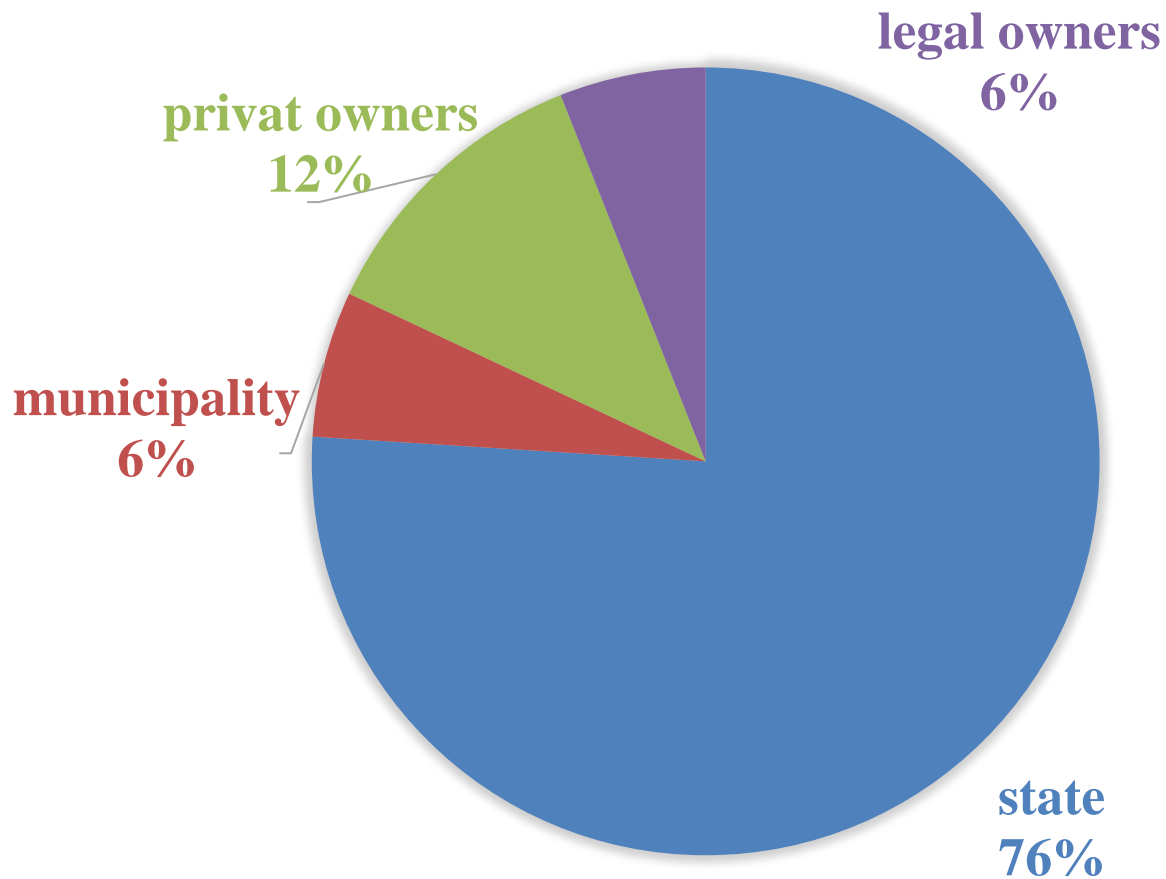
EU protected habitats in Latvia





Nature
Conservation Agency
Republic of Latvia

Ownership rights of EU protected forest areas





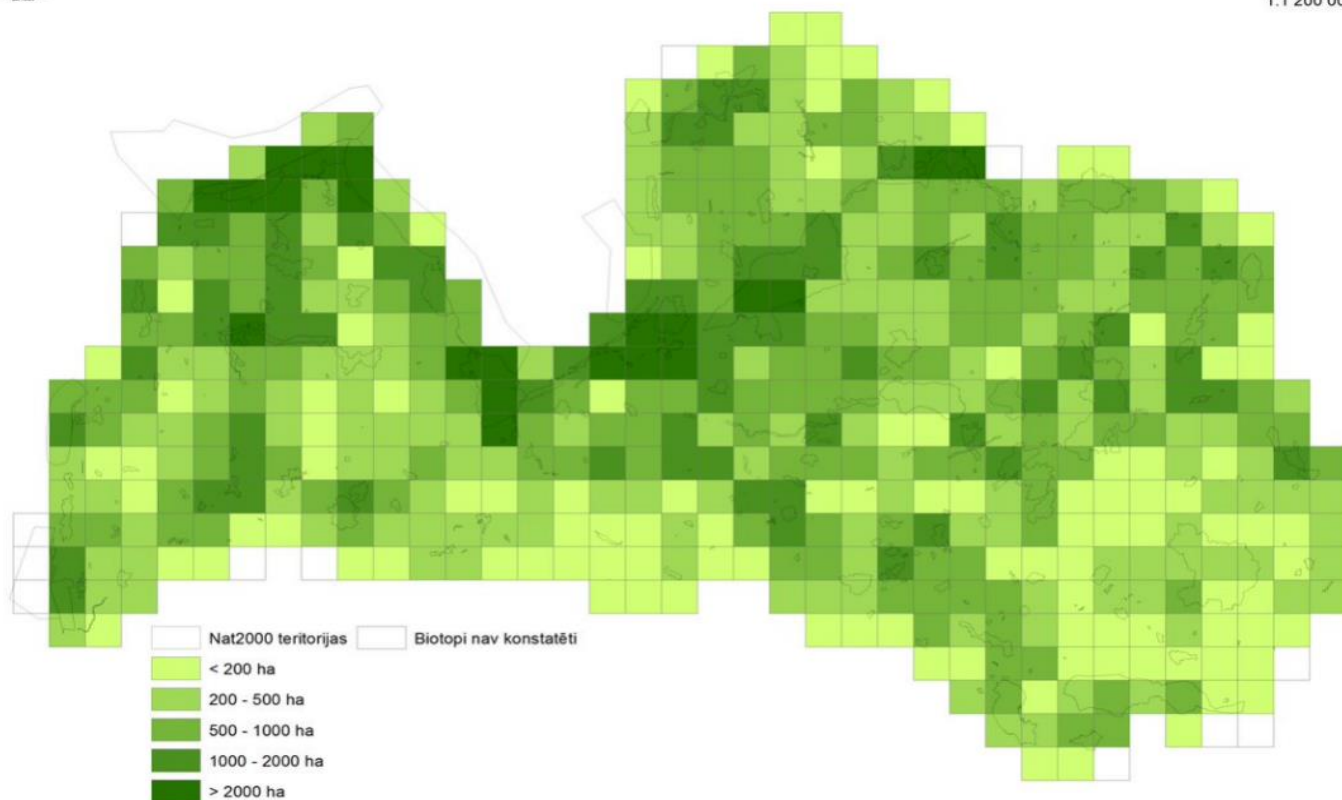
Nature
Conservation Agency
Republic of Latvia



EU protected forest habitats in Latvia

Dabas aizsardzības pārvalde
Dabas datu pārvaldības sistēma OZOLS

1:1 200 000

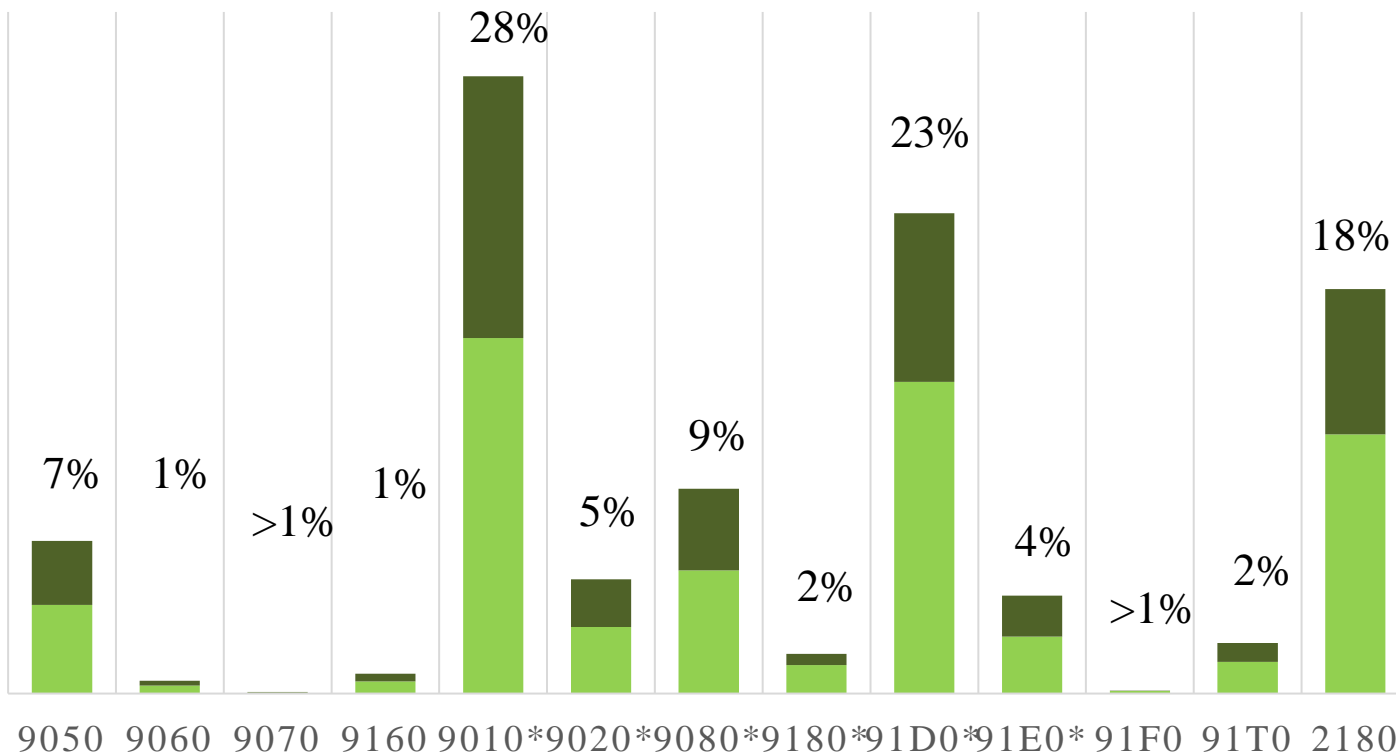




Nature
Conservation Agency
Republic of Latvia

EU protected habitats in and outside of Natura 2000

- EU protected biotops in Natura 2000, ha
- EU protected biotops outside Natura 2000, ha

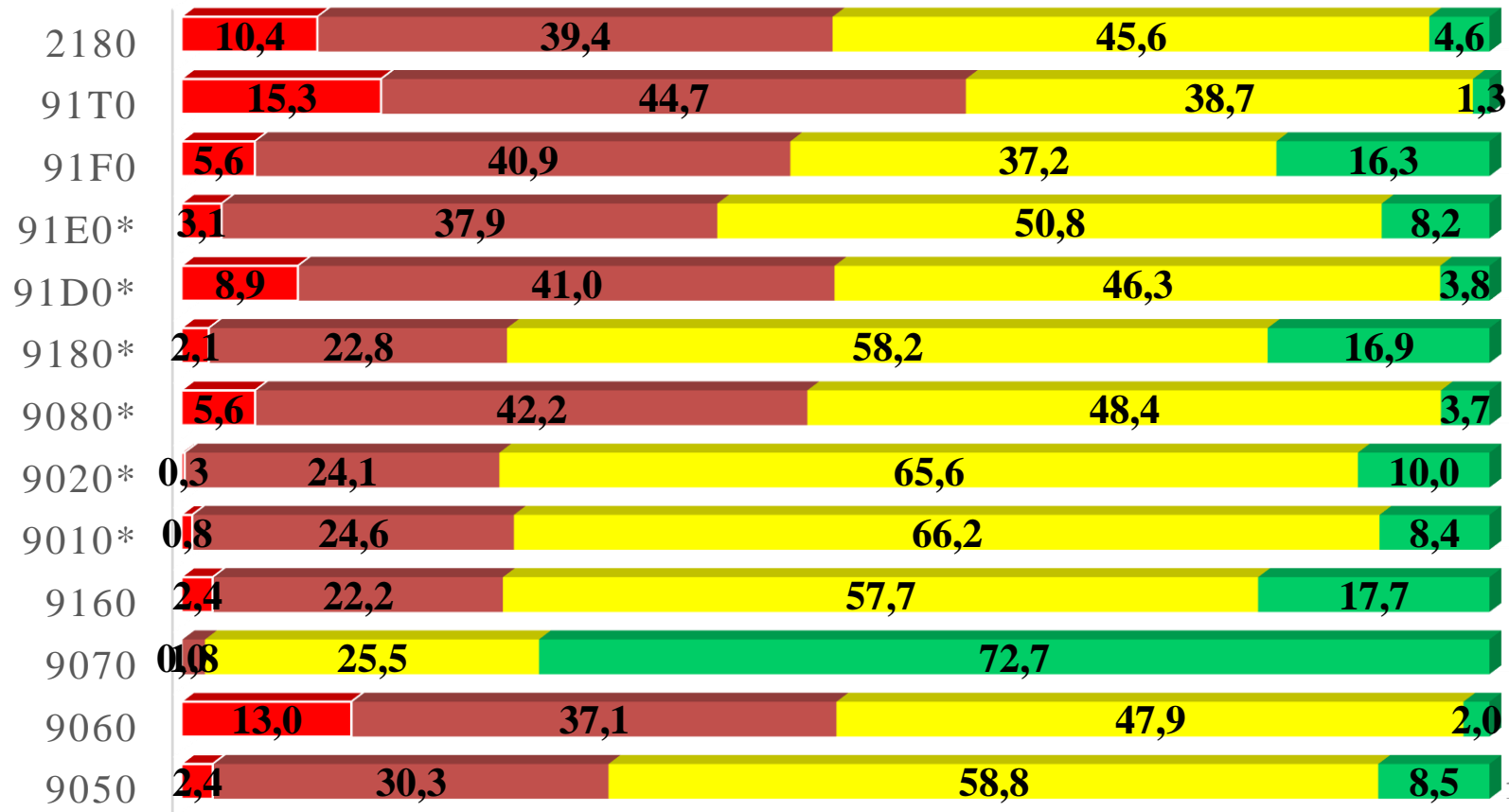


Quality of EU protected forest habitats



Nature Conservation Agency
Republic of Latvia

■ low, % ■ medium, % ■ good, % ■ exelent, %





Nature
Conservation Agency
Republic of Latvia

Examples of fragmentation





Nature
Conservation Agency
Republic of Latvia

Findings

- at least 52 new species in Latvia (*Amylocystis lapponica*)
- 2 hillforts
- 12 new caves.





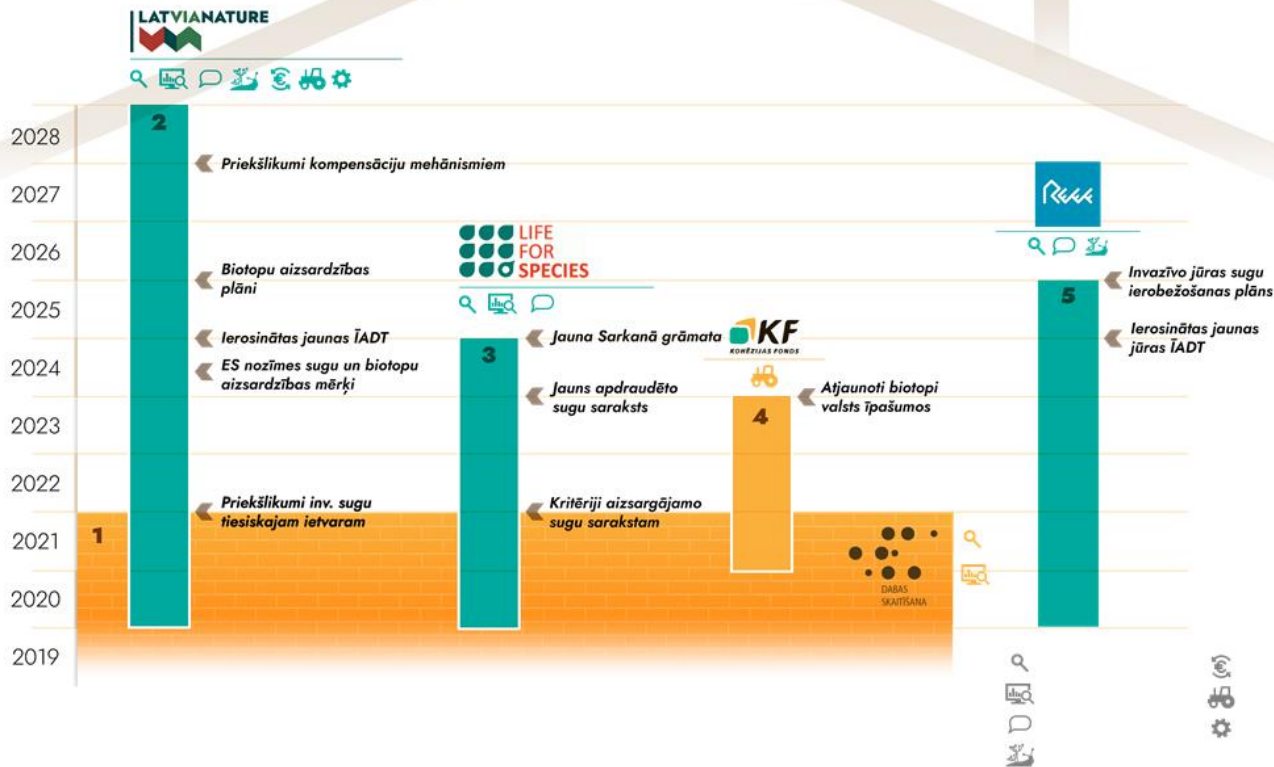
Nature
Conservation Agency
Republic of Latvia

Some conclusions from the mapping

- forest habitats are highly fragmented (+edge effect);
- notable negative effect of changed hydrological effect on wet forests (9080, 91D0, 91E0) – caused by both historical and ongoing actions
- better quality forests are located in protected areas;
- Coastal dune and dry boreal forests, aluvial forests, meadows, and grey dunes are invaded by aggressive invazive or alien species (*Amelanchier spicata*; *Rosa rugosa*; *Impatiens glandulifera*)



Some of the projects using data of Nature Census





Nature
Conservation Agency
Republic of Latvia

Jekabs.Dzenis@daba.gov.lv & Irisa.Mukane@daba.gov.lv
www.daba.gov.lv